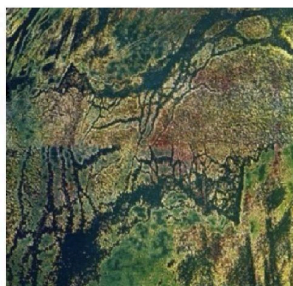


ON VIEW FEBRUARY 2 - MARCH 23, 2024

GALLERY IS OPEN FRIDAYS AND SATURDAYS FROM 5 TO 8 PM AND BY APPOINTMENT

# PRINTMAKING

INTAGLIO MONOTYPE WOODCUT SILKSCREEN



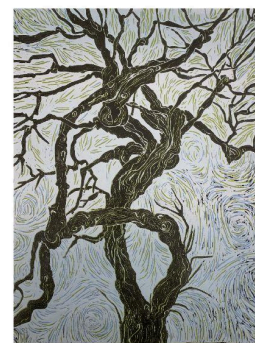
ELSE M HEINSEN



ANITA GELMAN



ELENA BRADY



SIGITA R PRANEVICIENE

## SLA ART SPACE

LITHUANIAN ALLIANCE OF AMERICA  
307 W 30<sup>TH</sup> STREET, NEW YORK, NY 10001  
(212) 563-2210

OPENING RECEPTION FRIDAY, FEBRUARY 2, 5-9 PM

SLA Art Space is delighted to present "Printmakers: intaglio, monotype, silkscreen, woodcut" a group exhibition showcasing artwork ranging from traditional print processes and more expansive, interdisciplinary approaches.

Curated by Sigita Rucinskaite-Praneviciene

The Exhibition will run from February 3rd to March 23rd, 2024, with the Opening Reception taking place on Friday, February 2, 5:00-9:00 PM

Printmakers: intaglio, monotype, silkscreen, woodcut" a group exhibition showcasing the unique art of printmaking and its capabilities as an art medium. Ranging from traditional print processes and more expansive, interdisciplinary approaches the exhibition will feature artwork of four artists-printmakers varied in subject matter , with each artist bringing their own unique practice and creative approach.

The theme for this show came from the collaboration of four artists who met at the printmaking studio at School of Visual Arts (SVA) and through the years produced a significant body of prints.

Featured artists: Elena Brady, Anita Gelman, Else M Heinse, Sigita Rucinskaite-Praneviciene.

The exhibition showcase Anita Gelman's etchings, images of dramatic mystery and transferred onto a copper plate without modern techniques realize both a 1970's xerox aesthetic and a blurry visual enigma. The artist uses traditional medium while exploring and arriving at unexpected results.



Anita Gelman "Madame Casati", 2018, Etching, 17" x 16"

The etchings and watercolor monotypes by Elena Brady. The artist takes inspiration from her love of the natural world, focussing on details that may often be overlooked.



Elena Brady, "Swallowtails", Etching, 2015, 21x27

A versatile artist Else M Heinsen's brings works from experimental printmaking with an affinity for textures and expertise in viscosity printing.



Else M Heinsen), "Reflection Cracks" 2020, intaglio-viscosity printing,12 x 12

Sigita Rucinskaite-Praneviciene creates by combining more than one printmaking method - the drypoint etching technique (lines incised into the metal plate with a metal needle) with monotype (inking and wiping plate/matrix surface) and using a printing press, which builds unique textural color qualities on paper.

Sigita uses woodblock printing to create a powerful art pieces: the narrative of the year 2023 and play with technique, color, and shapes, reflecting the passing days and events. Her inspiration flows from observations of New York City streets, human faces, and everyday events.



Sigita Rucinskaite-Praneviciene, Trees on Ascan Ave, 2023, woodcut reduction,12x16

Artists Bio:

**Elena Brady** was introduced to printmaking at Manhattanville College where she graduated with a Bachelor of Fine Arts degree. Elena continued printmaking at The New School where

she studied with Roberto De Lamonica and Mohammad Khalil. Her prints are mainly etchings and watercolor monotypes. Elena Brady have participated in many group shows and have prints in collections at The University of Nebraska, The University of Texas, San Antonio and in The Museo de Arte de Medellin, Medellin, Colombia.

**Anita Gelman** completed a BFA from the University of Michigan majoring in printmaking, continued to do etching at L'Ecole des Beaux Arts, Paris and then was granted the London Exchange Scholarship in etching to the Slade School of Art in London. She currently do etching at the School of Visual Arts and work at the NY Studio School of Drawing, Painting and Sculpture.

**Else M Heinsen** had a successful career in Package Design and Design Consulting. A few of her works are in MOMA's Industrial Design Collection. Twelve years ago, Else returned to fine art. Her style in printmaking is experimental, with an affinity for textures. Her expertise is in viscosity printing. She also does silkscreening and etching. Else is a versatile artist committed to teaching and inspiring everyone she works with at the SVA studios.

**Sigita R Praneviciene** with Pharmaceutical major from the Kaunas Medical Academy, Lithuania, 1993; BFA from The Fashion Institute of Technology, NY, 2022; ongoing continuing ed in printmaking with SVA. Groups show with NAWA, The Contemporary Printmaking Center in CT, SLA, and Contemporary Art Gallery Chelsea.